

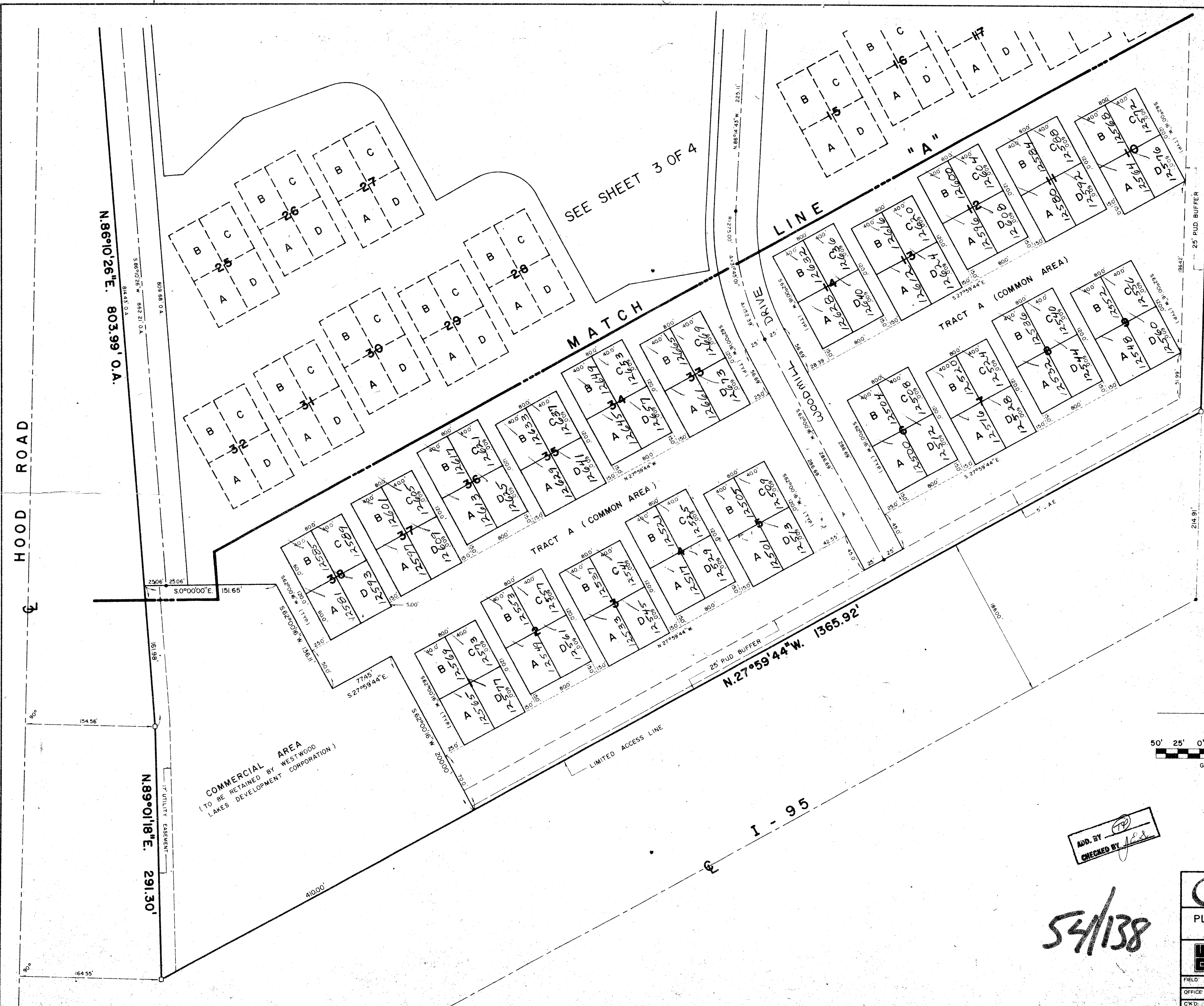
DRAWING NUMBER
54/138

DRAWING NUMBER

DRAWING NUMBER

DRAWING NUMBER

PLAN-HOLD CORPORATION, IRVINE, CALIFORNIA
REGISTERED PROFESSIONAL LAND SURVEYOR
RECORDING NUMBER 1138



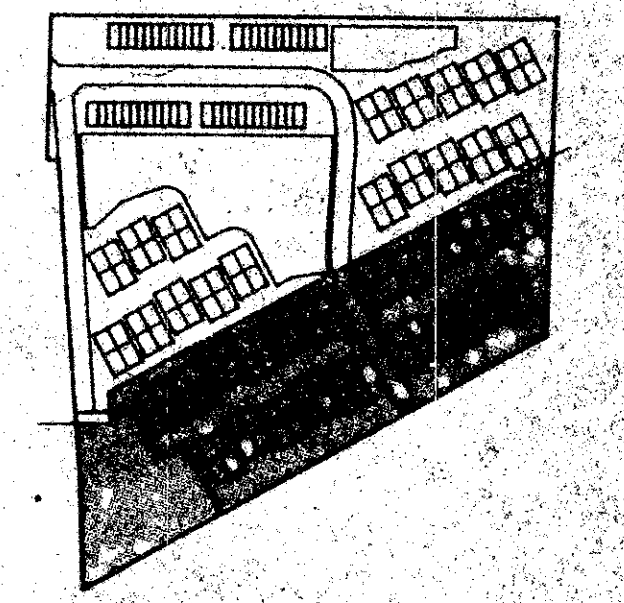
138

SECTION 35/4/4
N. 87° 56' 04" W. 811.60' O.A.

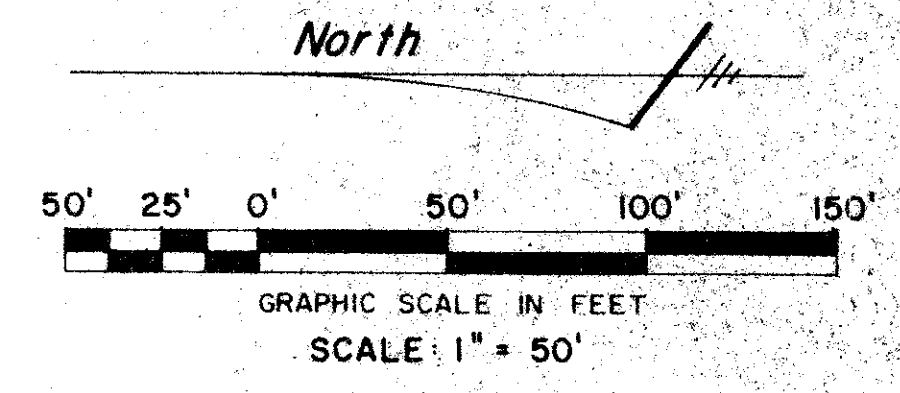
NOT PLATTED

dp 11/3/4
35/4/4

SUBDIVISION * Westwood Lakes
 BOOK 54 PAGE 138
 FLOOD ZONE B FLOOD MAP # 126 D
 QUAD # 27 ZONING
 CE ZIP CODE 92718
 PUD NAME Plat # Westwood Lakes



KEY MAP



ADD. BY [Signature]
 CHECKED BY [Signature]

54/138

0349-004

PLAT OF WESTWOOD LAKES
 PLAT NO. 4 WESTWOOD GARDENS
 (A PUD.)

WILLIAM E. WALLACE, INC.
 CONSULTING ENGINEERS, LAND PLANNERS & SURVEYORS
 9170 ALTERNATE AVE., LAKE PARK, FL 33410 • 305/942-4233

FIELD	R 1	JOB NO	85-644	FR. SJ	35, 36
OFFICE	R. R.	DATE	AUG. '86	DWG. NO.	85-644
C.W.D.	DJM	REF.		SHEET	4 OF 4